

3. PHOTOSHOP - Changing your eye colour

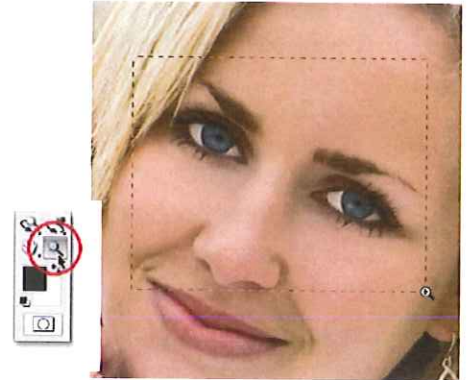
In this photo retouching tutorial, we'll learn a very simple technique for changing someone's eye colour in a photo using a **Hue/Saturation adjustment layer**.

Start with a picture of a person (or yourself).

Step 1:

Make it easier to see by zooming in on the eyes in the photo. Select the **Zoom Tool** from the Tools palette, or press the letter Z on your keyboard to select it with the shortcut. With the Zoom Tool selected, click and drag out a selection box around the eyes.

Release your mouse button, and Photoshop fills the document window with the area you selected.



Step 2:

Next, select the eyes so not to affect any other areas of the image. For that, use the **Lasso Tool**. Select the Lasso Tool from the Tools palette, or press the letter L on your keyboard.



With the Lasso Tool selected, drag a selection around one of the eyes. Don't worry if the selection outline isn't perfect since it can be cleaned up later. Once the first eye is selected, hold down the **Shift** key and draw a selection around the other eye. Holding down the Shift key will add the new selection to the previous one, allowing both eyes to be selected at once.



The pupils in the centre of the eyes do not need to be selected, so remove them from the selection. Hold down the **Alt** key and drag around each pupil with the Lasso Tool. This will remove them from the selection, leaving only the coloured area selected. Again, don't worry about being overly precise.



Step 3:

Click on the **New Adjustment Layer** icon at the bottom of the Layers palette (it's the circle split diagonally between black and white), then select **Hue/Saturation** from the list of adjustment layers that appear.

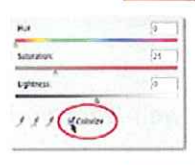


Step 4

The options and controls for the Hue/ Saturation dialog box will appear inside the **Adjustments Panel**.

Select the **Colorize** option by clicking inside.

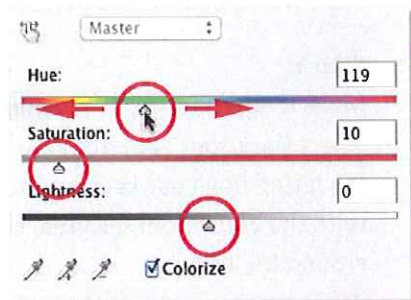
change colour in the document window.



Step 5

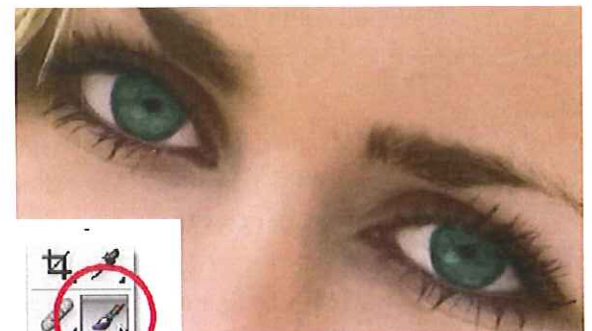
To change the colour, simply adjust the **Hue**, **Saturation** and **Lightness** options by dragging their sliders left or right. Hue will change the basic colour, Saturation changes the saturation of the colour, and Lightness affects the overall brightness. Be careful not to drag the Saturation or Lightness sliders too far to the right, though, since things can quickly become unnatural looking.

The image in the document window will continually update as you move the sliders so you can see a live preview of the changes.



click OK to exit out of the Hue/ Saturation dialog box.

blue to green.



Step 6

If your initial selection of the eyes with the Lasso Tool is as easy as painting with a brush. Select the **Brush Tool** from the Tools palette, or press the letter **B** to select it with the keyboard shortcut.



If we look in our Layers palette, we see our Hue/ Saturation adjustment layer sitting above the image on the Background layer. One of the great things about adjustment layers is that they include a built-in **layer mask**, which makes it easy to control exactly which areas of the image are affected by the adjustment layer and which are not. All that is needed is to paint on the layer mask with the brush, but first, make sure the layer mask is selected. A white highlight border around the mask thumbnail means the mask is selected. If there is no highlighted border, simply click directly on the thumbnail to select the mask.



Step 7

To clean up the eyes, simply paint over any problem areas with the brush. Paint with white to add to the area that the Hue/Saturation adjustment layer is affecting, or with black to hide the effects of the adjustment layer.

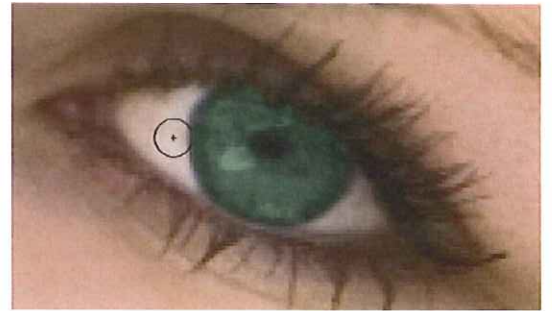
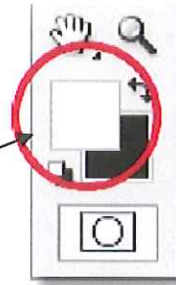
Photoshop paints using your current Foreground colour, which you can see by looking at the **Foreground color swatch** near the bottom of the Tools palette.

With the layer mask selected, press the letter **D** on your keyboard to reset your Foreground colour to white.

To quickly switch to black, press the letter **X**, which swaps the Foreground and Background colours.

Press **X** again to switch back to white.

To change the size of your brush, use the left and right bracket keys on your keyboard. Press the **left bracket key** ([) repeatedly to make the brush smaller or the **right bracket key** (]) to make it larger. Press **Shift+left bracket** to make the brush edges softer if needed, or **Shift+right bracket** to make them harder.



The final product.

